

Cal. NH35A

ϕ 27.40 mm
(ψ 29.36 mm with Dial Holding Spacer)

H 5.32 mm

Item	Version No.
Specification	Version 3
Appearance - 1	Version 2
Appearance - 2	Version 1
Casing	Version 2
Hand Fitting	Version 3
Hand Setting Stem	Version 2
Dial	Version 1
Assembly Plan	Version 1
Hands	Version 1



MOVEMENT SPECIFICATION

CAL.NH35A 12 Ligne Mechanical Movement Three Hands with Date

1. MOVEMENT DIMENSIONS

- Outside diameter ϕ 27.40 mm
- Casing diameter ϕ 29.36 mm (with dial holding spacer)
- Total height 5.32 mm

2. FUNCTIONS

- Winding mechanism
Manual winding
Automatic winding with ball bearing
Both winding with one way clutch
- Additional function
Date display with quick date correction, second hand reset
- Jewels
24 jewels
- Accuracy
-20 ~ +40 seconds per day ($23^{\circ}\pm 2^{\circ}\text{C}$)
- Shock resistance
Shock-absorber device for balance staff
- Vibration frequency
6 vibrations per second (21,600 vibrations per hour)
- Duration time
More than 41 hours
- Regulation hands unbalance
Hour : Less than $1.50 \mu\text{N}\cdot\text{m}$ (150 mg·mm)
Minute : Less than $1.25 \mu\text{N}\cdot\text{m}$ (125 mg·mm)
Second : Less than $0.60 \mu\text{N}\cdot\text{m}$ (60 mg·mm)
DC : $\geq 4800 \text{ A / m}$
- Antimagnetic

3. HANDLING AND CORRECTIONS

- 1) Crown at normal position
Clockwise : Manual winding
Counterclockwise : Free
- 2) Crown pulled out to 1st click
Clockwise : Free
Counterclockwise : Quick date correction
- 3) Crown pulled out to 2nd click
Time setting, second hand reset

4. DIAL FIXED METHOD

The dial is fixed by two dial leg holes of dial holding spacer

5. TEST OF ACCURACY

- Equipment to be used
Witschi WATCH EXPERT
- Duration of measurement
20 seconds

6. FITTING FORCE FOR HANDS

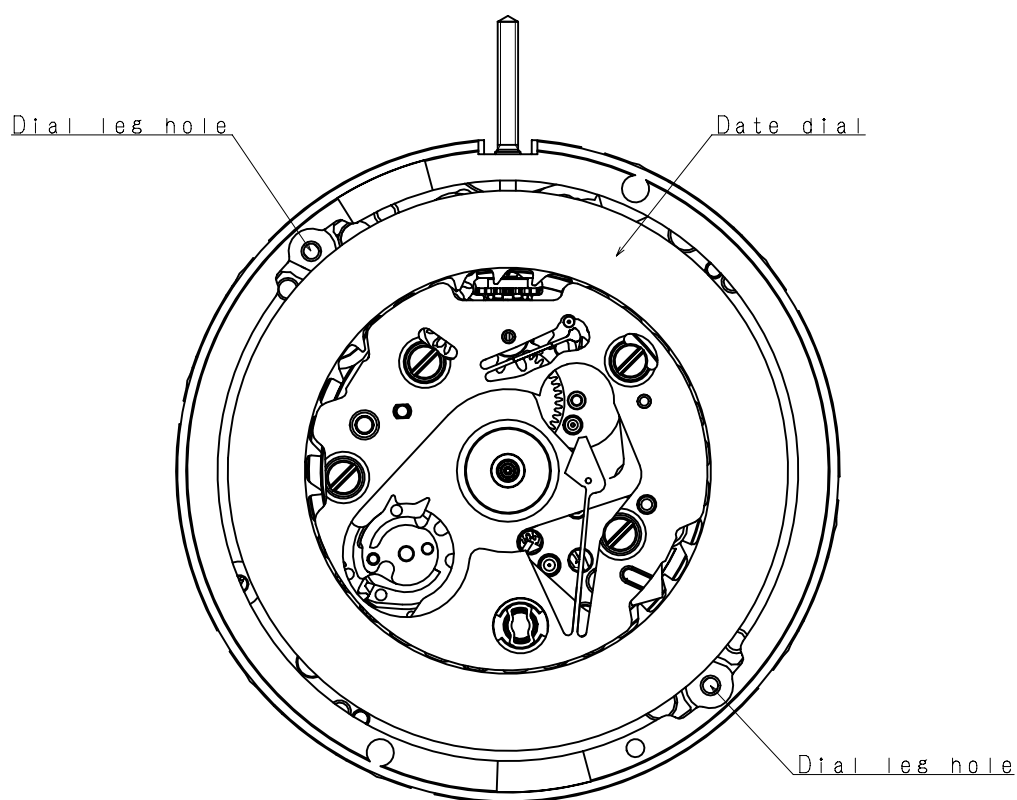
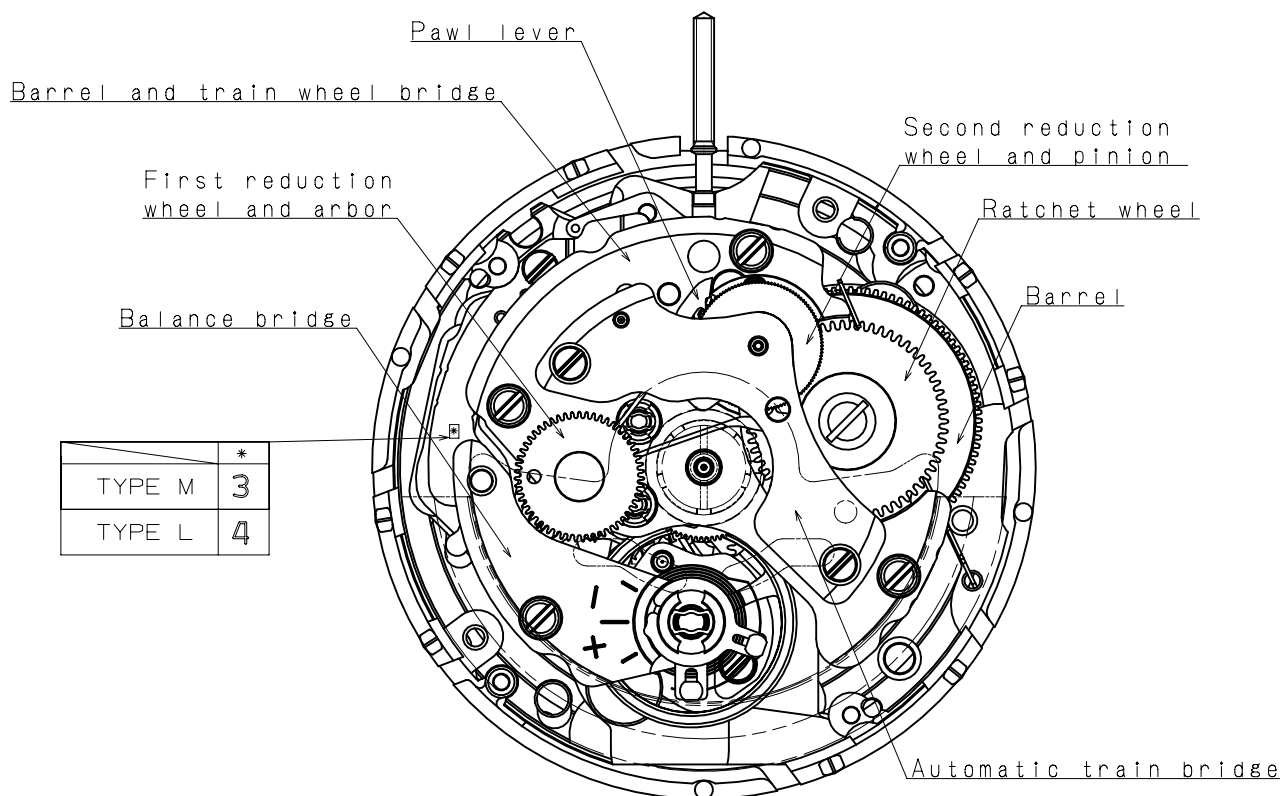
- Hour hand : Less than 50 N
- Minute hand : Less than 50 N
- Second hand : Less than 30 N

7. CASING

The movement is fixed by dial holding spacer

- *1. Screw type case back is required
- *2. Non-corresponding with Diver's watch

*** All specifications are subject to change without notice.**



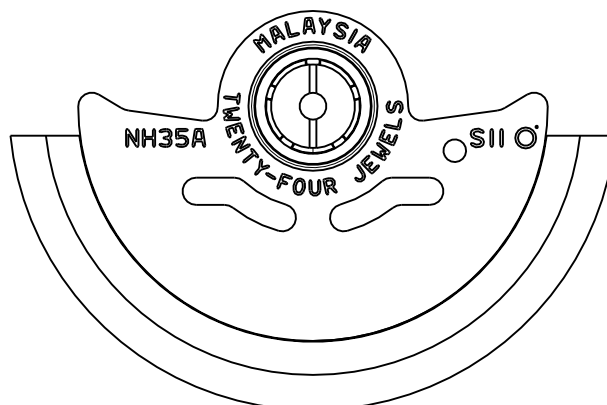
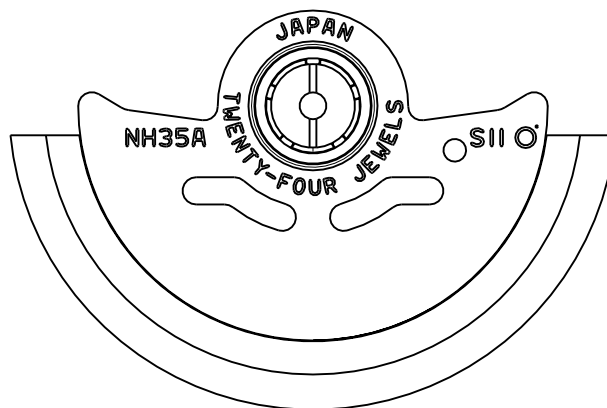
Scale : 3/1

Unit : 1=1/100mm

Version:2

Oscillating weight

Marking	Country of origin
JAPAN	JAPAN
MALAYSIA	MALAYSIA



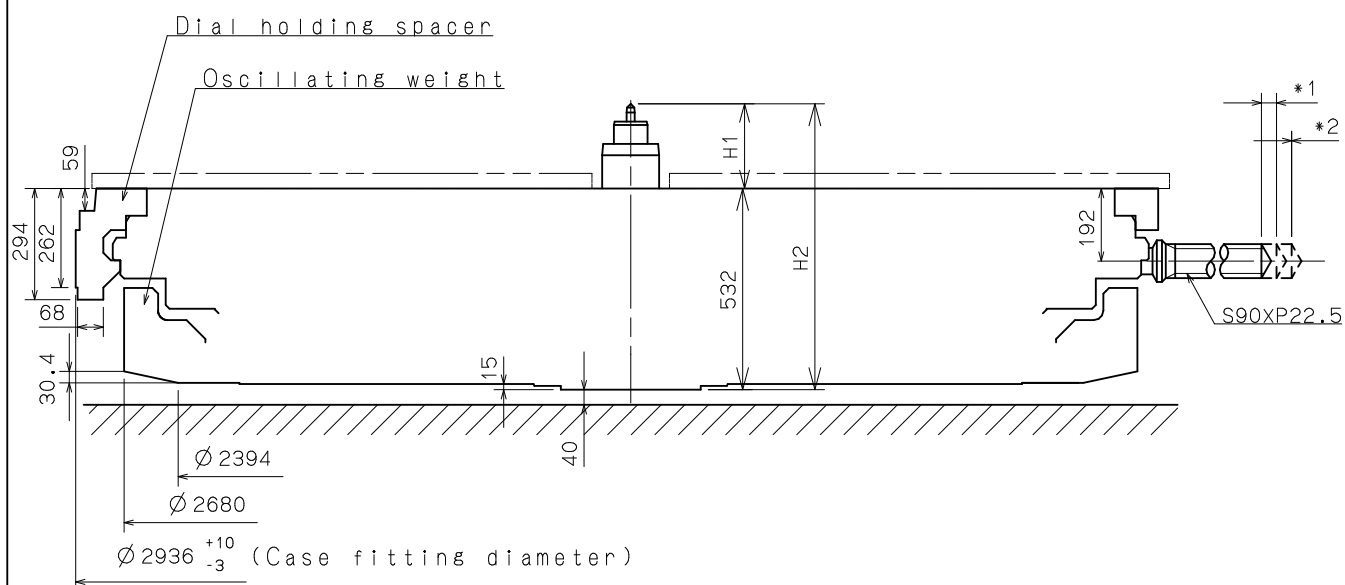
Scale : 3/1

Unit : 1=1/100mm

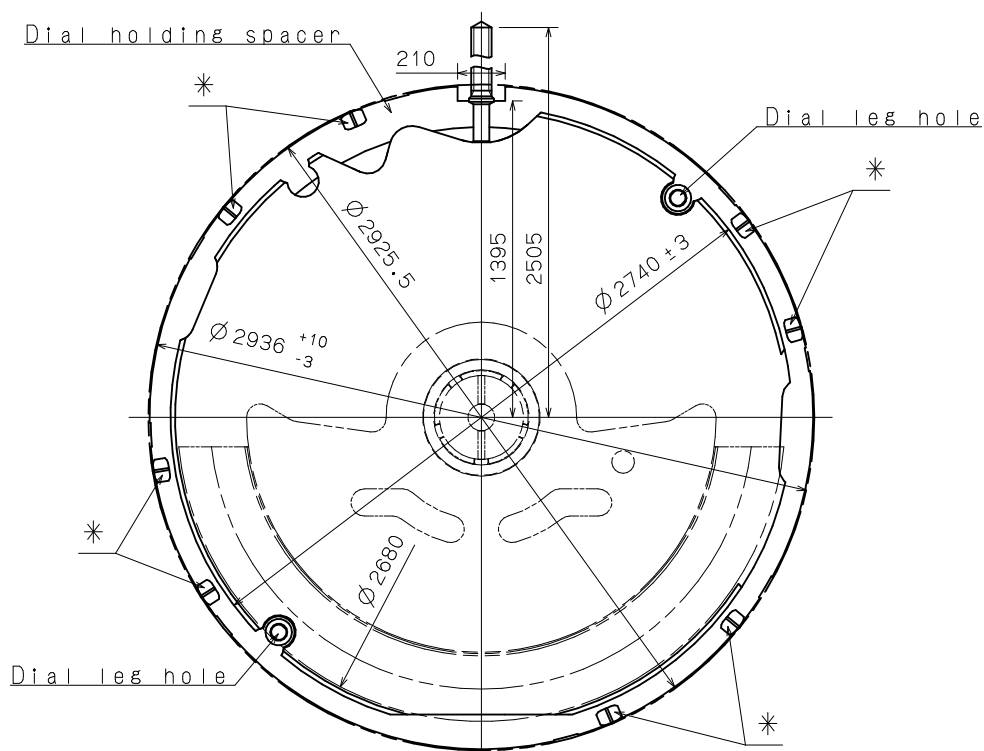
Version:1

*1. First pull out stroke 39.9

*2. Second pull out stroke 40.0



Center post		TYPE M	TYPE L
Maximum height from dial support surface	H1	226.7	266.7
Total height incl. movement	H2	758.7	798.7



Scale = 3/1

*Projection to fix movement to case.

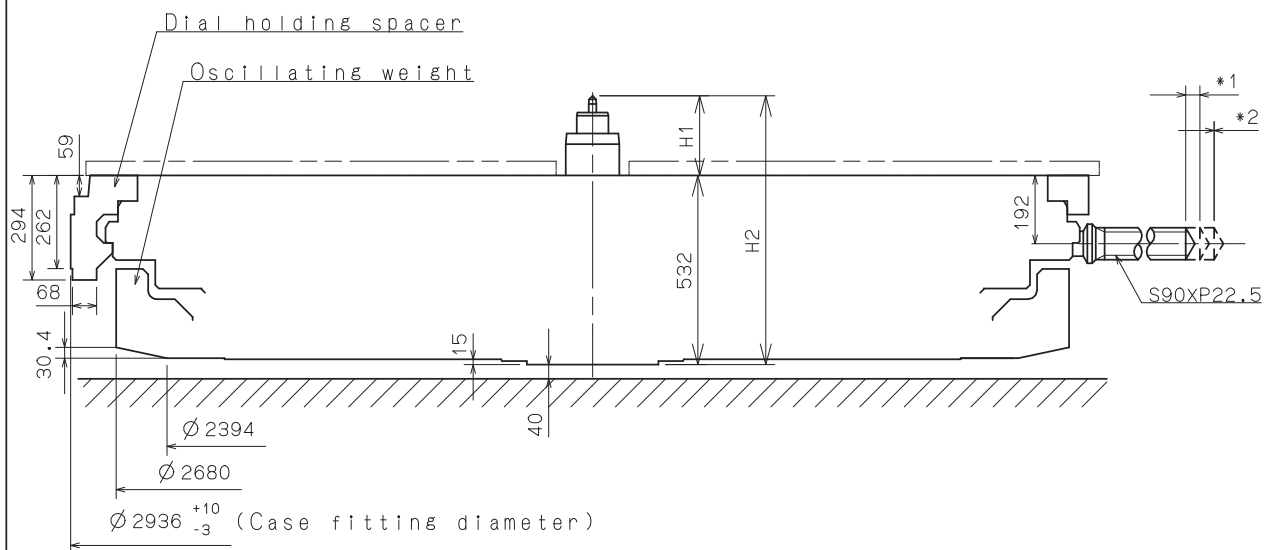
Scale : 5/1 (3/1)

Unit : 1=1/100mm

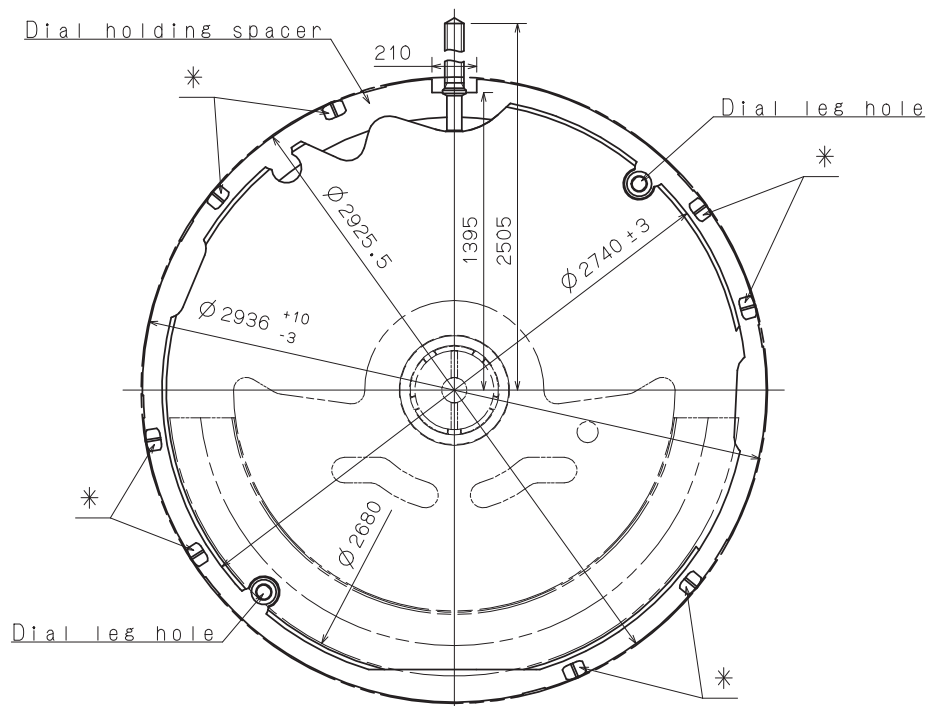
Version:2

```
*1. First pull out stroke 39.9
```

```
*2. Second pull out stroke 40.0
```



Center post 中心柱位		Type M—般針高	Type L高針
Maximum height from main plate surface 與機芯平面之最大高度	H 1	226 . 7	266 . 7
Total height incl. movement 機芯總高度	H2	758 . 7	798 . 7



Scale = 3/1

*Projection to fix movement to case.

Scale : 5/1 (3/1)

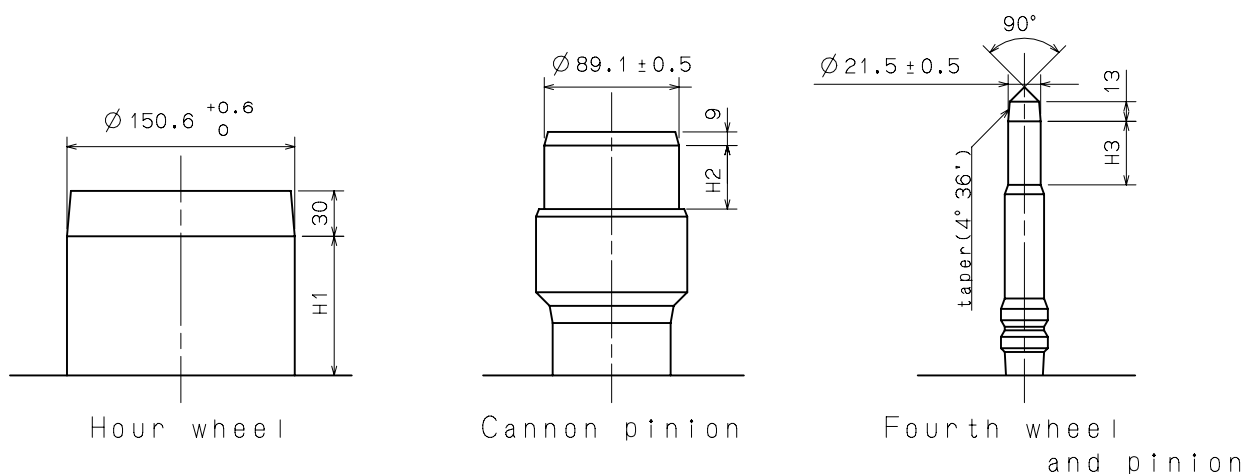
Version: 2

Unit : 1 = 1/100mm

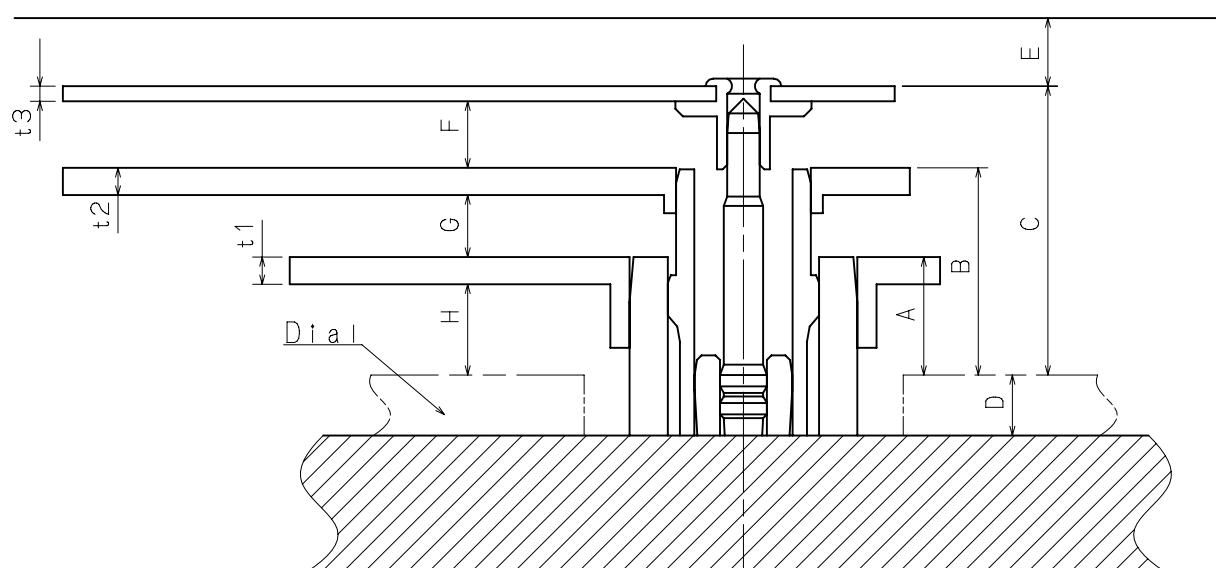
Hand fitting

Cal. NH35A

Hour hand unbalance $\leq 1.50\mu\text{N}\cdot\text{m}$ (150mg·mm)
 Minute hand unbalance $\leq 1.25\mu\text{N}\cdot\text{m}$ (125mg·mm)
 Second hand unbalance $\leq 0.60\mu\text{N}\cdot\text{m}$ (60mg·mm)



	Part. No.			Dimension		
	Hour wheel	Cannon pinion	Fourth wheel and pinion	H1	H2	H3
TYPE M	0273 182	0225 425	0144 184	88	61	42
TYPE L	0273 184	0225 426	0144 185	128	61	42



	A	B	C	D	E	F	G	H	t1	t2	t3
TYPE M	78	137	191	40	45	44	41	60	18	18	10
TYPE L	118	177	231	40	45	44	41	100	18	18	10

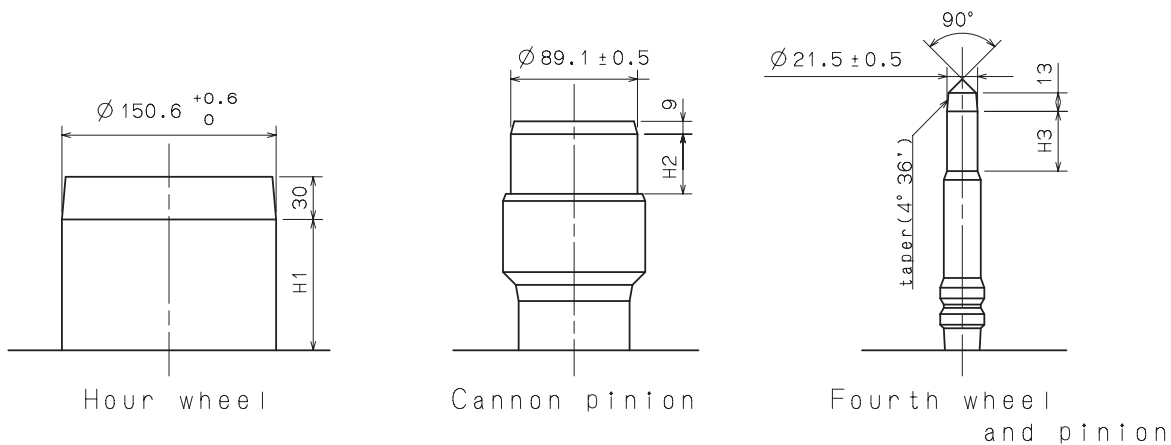
Scale : 20/1
 Unit : 1=1/100mm

Version : 3

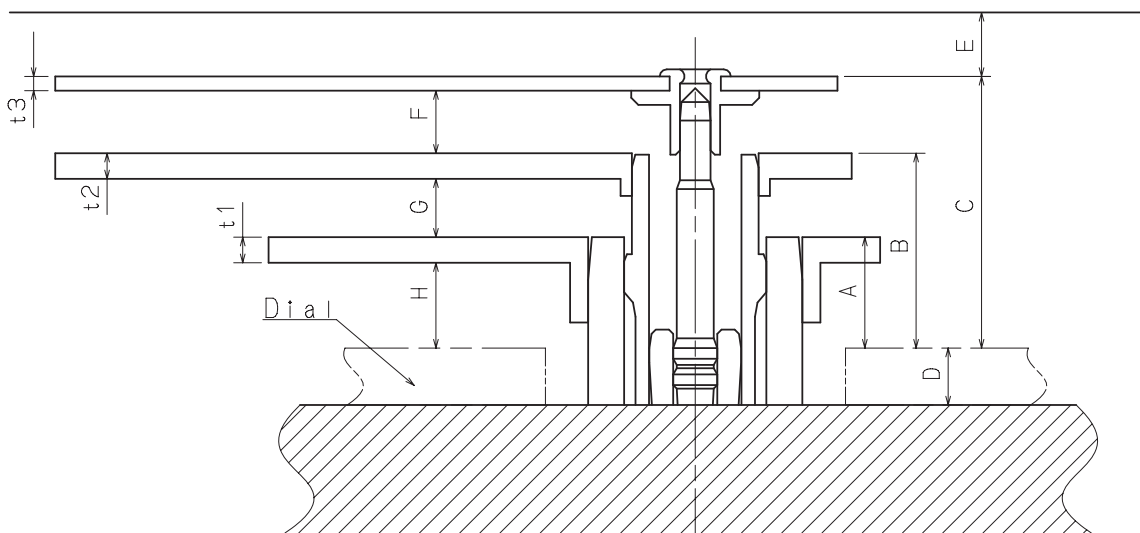
Hand fitting

Cal. NH35A

Hour hand unbalance $\leq 1.50\mu\text{N}\cdot\text{m}$ (150mg·mm)
 Minute hand unbalance $\leq 1.25\mu\text{N}\cdot\text{m}$ (125mg·mm)
 Second hand unbalance $\leq 0.60\mu\text{N}\cdot\text{m}$ (60mg·mm)



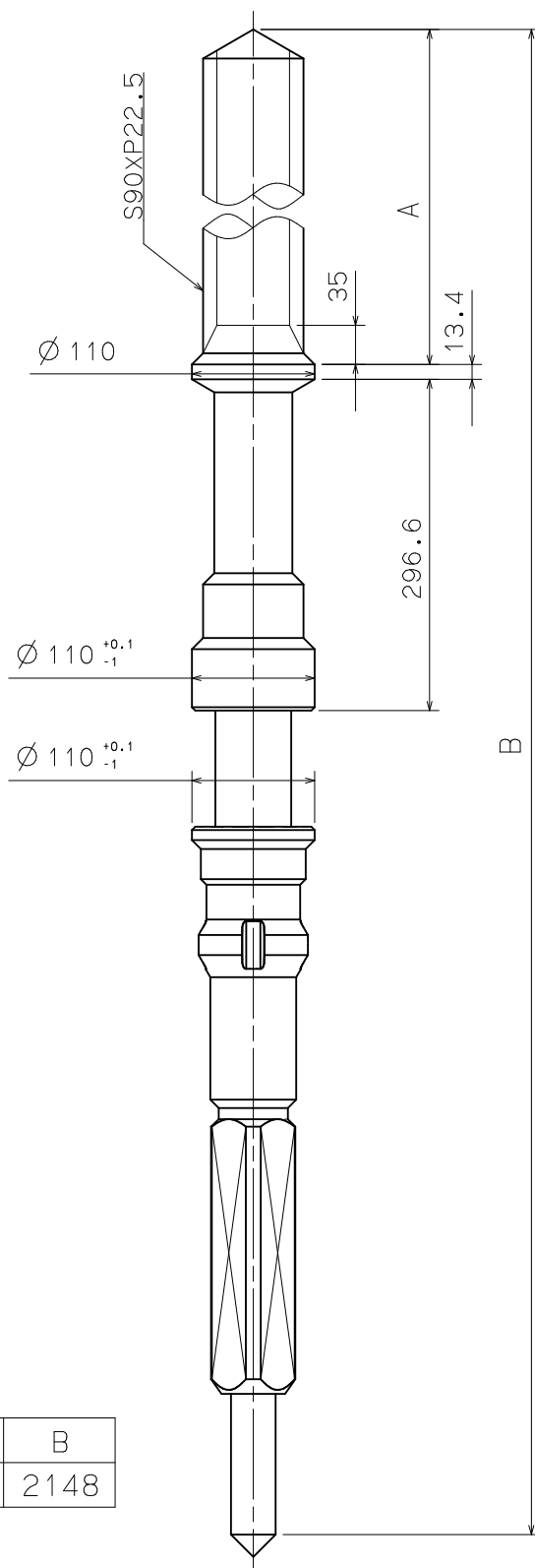
	Part. No.			Dimension		
	Hour wheel 時針輪	Cannon pinion 分針輪 (十反)	Fourth wheel and pinion 秒針輪	H1	H2	H3
Type M 一般針高	0273 182	0225 425	0144 184	88	61	42
Type L 高針	0273 184	0225 426	0144 185	128	61	42



	A	B	C	D	E	F	G	H	t1	t2	t3
Type M 一般針高	78	137	191	40	45	44	41	60	18	18	10
Type L 高針	118	177	231	40	45	44	41	100	18	18	10

Scale : 20/1
 Unit : 1=1/100mm

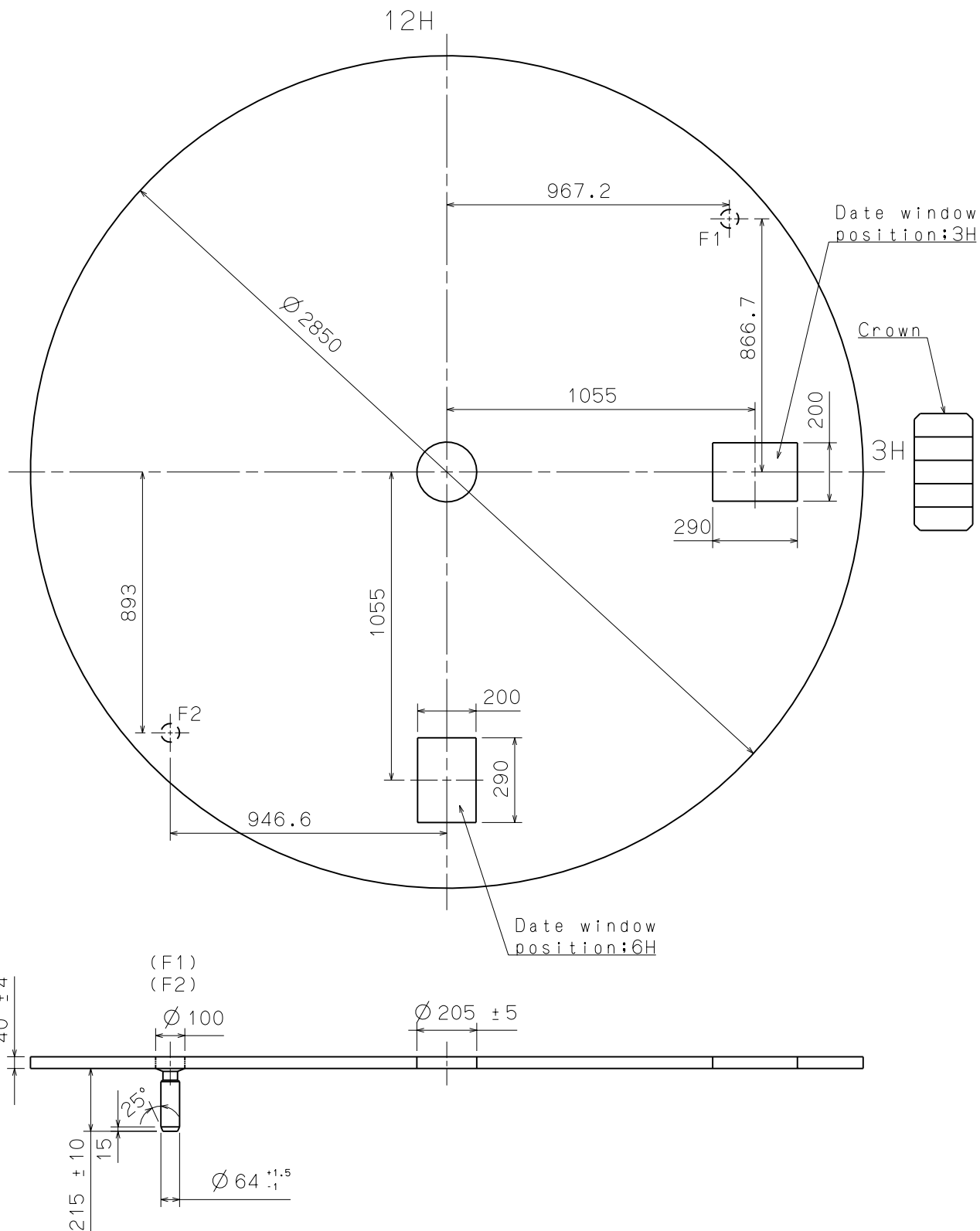
Version : 3



Parts No.	A	B
0351 200	1100	2148

Scale : 15/1
Unit : 1=1/100mm

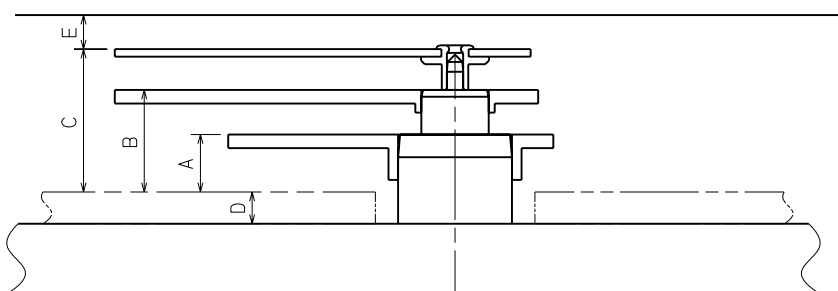
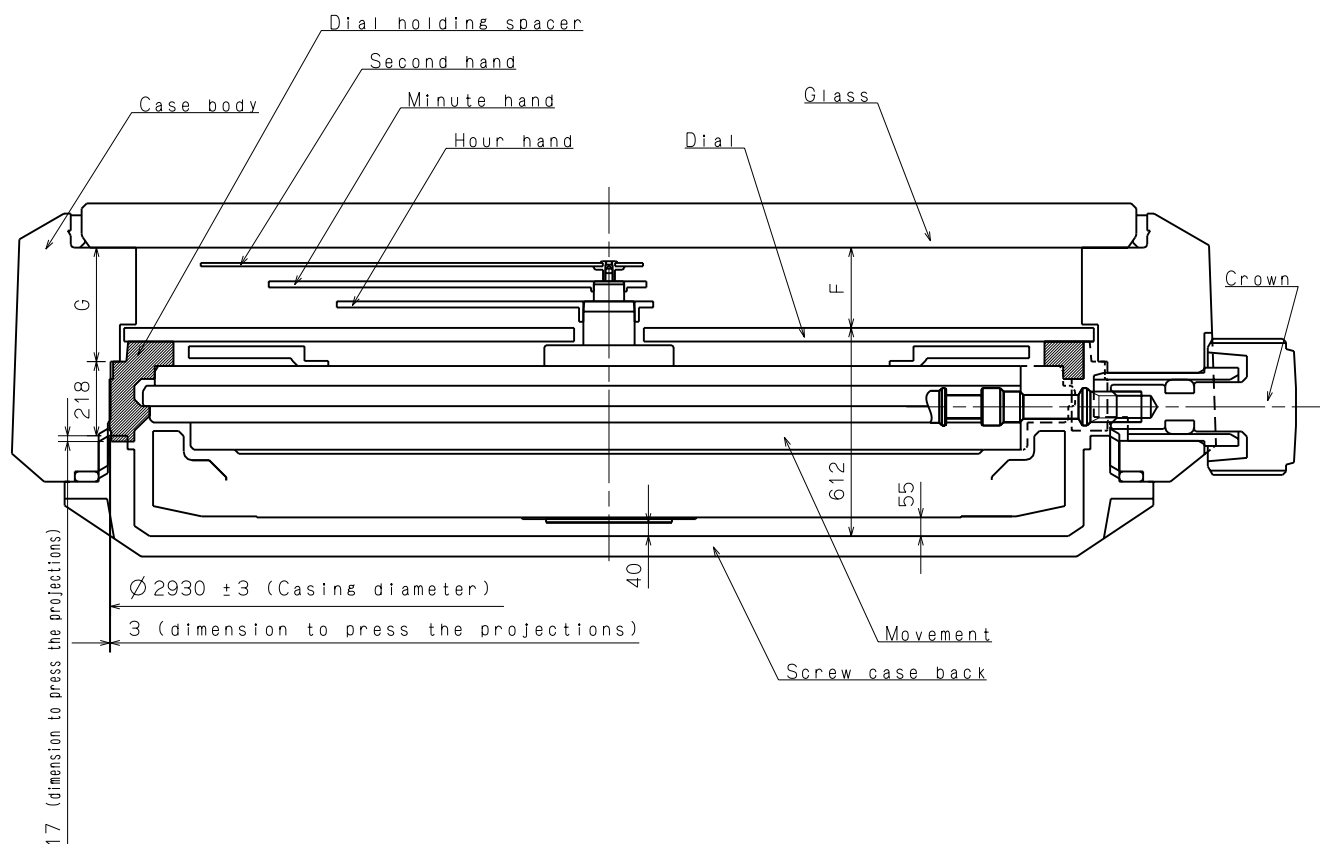
Version:2



Scale : 5/1

Unit : 1=1/100mm

Version: 1

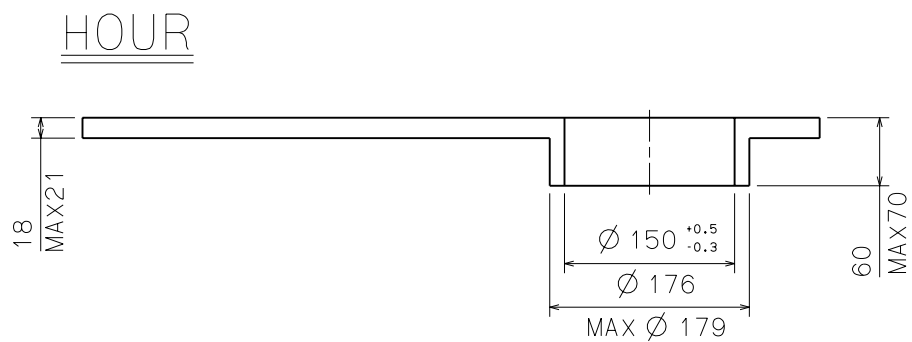
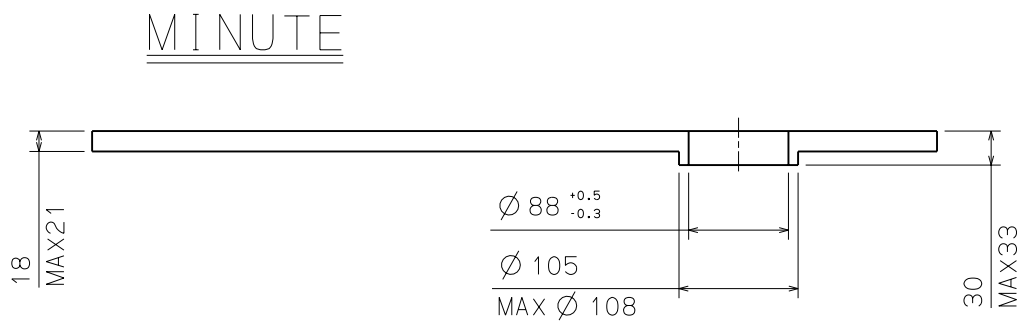
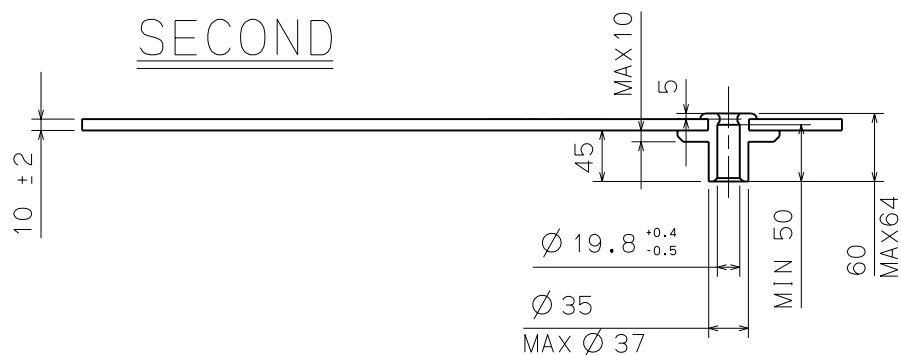


	A	B	C	D	E	F	G
TYPE M	78	137	191	40	45	236	335
TYPE L	118	177	231	40	45	276	375

Scale : -

Unit : 1=1/100mm

Version:1



Scale : -

Unit : 1 = 1/100mm

Version: 1